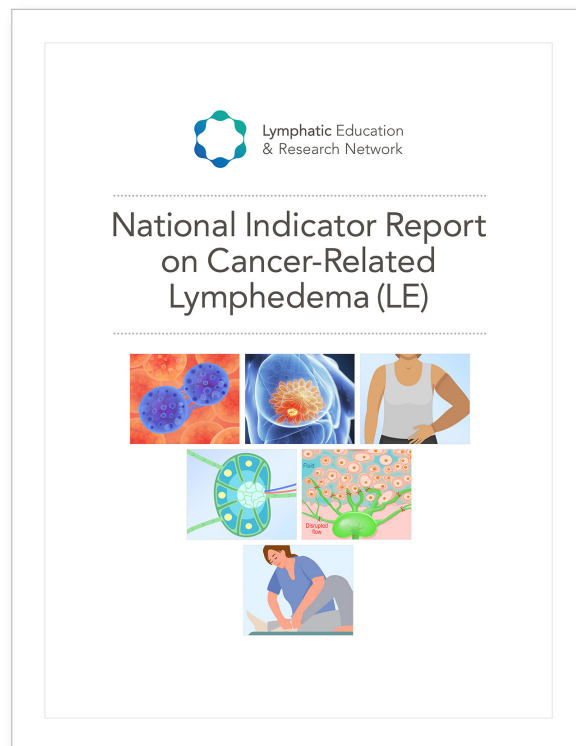




Lymphatic Education
& Research Network

National Indicator Report on Cancer-Related Lymphedema (LE)

COMMUNICATIONS TOOL KIT



OVERVIEW

GOAL: Broad distribution of the **National Indicator Report on Cancer-Related Lymphedema (LE)**

The **National Indicator Report on Cancer-Related Lymphedema (NIR)** is a groundbreaking publication, and our goal is to maximize its reach. The widespread distribution of this first-of-its-kind report is crucial for advancing the future of lymphatic disease care and awareness.

HOW TO SHARE THE NIR: In the folder accompanying this document, you'll find a variety of assets designed to help you share the NIR with three key audiences: Advocates, Healthcare Professionals, and Policymakers. Use the materials best suited to your audience to communicate the report's findings and significance effectively.

ASSETS ENCLOSED:

- One-page Summary for each key audience
- Social media images
- Sample blurb and graphic for newsletters
- PDF of the NIR

NIR HYPERLINK: lymphaticnetwork.org/national-indicator-report

For any questions, please contact LE&RN's Communications Director, Sara Sapp, at ssapp@lymphaticnetwork.org

facts you need to know

- An estimated 10 million Americans live with lymphedema (LE).
- Lymphedema spares no one: people of all ages, sex, races, ethnicities, and socioeconomic status are affected.
- Lymphedema is often overlooked, leading to delayed diagnosis and treatment.
- Gaps in medical education contribute to low awareness among providers.
- For free support in navigating the challenges of lymphatic disease, visit the **LE&RN RESOURCE CENTER** or call 1-855-378-8163 to connect with an expert.

EMPOWERING ADVOCATES
New Report on Cancer-Related Lymphedema

The Lymphatic Education & Research Network created the first-of-its-kind report to equip you, healthcare professionals, researchers, and policymakers with discussion points to effectively advocate for people living with cancer-related lymphedema and highlight areas in need of urgent attention, revealing opportunities to heighten awareness and improve the standard of care.

LE&RN is enlisting healthcare professionals to focus on five key indicators for enhanced patient outcomes:

1. **Epidemiology:** Developing a better understanding of lymphedema epidemiology
2. **Access to Care:** Broadening the accessibility of lymphedema care
3. **Health Disparities:** Addressing inequities in access to lymphedema care
4. **Transition in Care:** Easing the transition of care from pediatric to adult services
5. **Perceptions Amongst Stakeholders:** Aligning stakeholder perceptions with patient needs

Join LE&RN in advocating to policymakers for:

- Increasing federal and state funding for research through the National Institutes of Health or other mechanisms to advance lymphedema treatments and cures.
- Improve insurance coverage and reduce out-of-pocket costs for compression supplies and other therapies to reduce the disease burden.
- Mandating the inclusion of lymphatic system education in medical and nursing schools to provide comprehensive lymphedema education for healthcare providers.
- Promote public awareness initiatives to reduce stigma and encourage early diagnosis.

Visit LymphaticNetwork.org to learn more and get involved. Remember, you are not alone in this journey.

LE&RN
Lymphatic Education & Research Network
134 West 14th Street, 2nd Floor
New York, NY 10011 • 516-425-9675
info@lymphaticnetwork.org
www.lymphaticnetwork.org

ADVOCATES

key facts

- An estimated 10 million Americans live with lymphedema (LE).
- Delayed diagnosis is associated with worse outcomes and higher costs.
- LE&RN Centers of Excellence provide multidisciplinary, specialized care.

By staying informed about the latest advances in lymphedema diagnosis and treatment, you can make a significant difference in your patients' lives. The **Lymphatic Education & Research Network (LE&RN)** offers valuable educational resources, provider networks, and research updates to support you in delivering optimal care.

CLOSING THE GAP IN LYMPHEDEMA CARE
What Every Healthcare Professional Should Know

Lymphedema (LE) is a chronic disease that affects millions of Americans, yet it remains under-recognized and often misdiagnosed. As a healthcare professional, you play a critical role in improving outcomes for patients living with lymphedema. The attached National Indicator Report on Cancer-Related Lymphedema—created by the Lymphatic Education & Research Network (LE&RN)—highlights areas in need of urgent attention, revealing opportunities to heighten awareness and improve the standard of care. Below is a summary of key information found in the attached document.

Essential Insights for Healthcare Providers:

- Lymphedema is often overlooked, leading to delayed diagnosis and treatment.
- Gaps in medical education contribute to low awareness among providers.
- Early intervention and comprehensive management can improve patient outcomes.
- A multidisciplinary approach and specialized centers offer best practice care.

Five Key Indicators for Immediate Focus to Improve Patient Outcomes:

1. **Epidemiology:** Developing a better understanding of lymphedema epidemiology
2. **Access to Care:** Broadening the accessibility of lymphedema care
3. **Health Disparities:** Addressing inequities in access to lymphedema care
4. **Transition in Care:** Easing the transition of care from pediatric to adult services
5. **Perceptions Amongst Stakeholders:** Aligning stakeholder perceptions with patient needs

Visit LymphaticNetwork.org to access clinical guidelines, patient education materials, and opportunities for professional development. Together, we can close the gap in lymphedema care.

LE&RN
Lymphatic Education & Research Network
134 West 14th Street, 2nd Floor
New York, NY 10011 • 516-425-9675
info@lymphaticnetwork.org
www.lymphaticnetwork.org

HEALTHCARE PROFESSIONALS

key summary

- Lymphedema is an underappreciated public health issue affecting millions.
- Delayed care leads to costly complications, disability, and health disparities.
- Strategic policies and investments can drastically improve patient outcomes.

THE UNTOLD BURDEN OF LYMPHEDEMA
A Call to Action for Policymakers

Lymphedema (LE) is a debilitating chronic disease, most prevalent in breast cancer survivors. Resulting from the malfunction of the lymphatic system, it leads to significant physical, emotional, and financial burdens. An estimated 10 million Americans live with lymphedema, yet it remains an underappreciated and underfunded public health issue. As a policymaker, you have the power to drive change and improve the lives of those impacted by lymphedema.

We need your leadership in advancing policies and investments aimed at:

- Increasing federal and state funding for research through the NIH or other mechanisms to advance lymphedema treatments and cures
- Improve insurance coverage and reduce out-of-pocket costs for compression supplies and other therapies to reduce the disease burden
- Mandating the inclusion of lymphatic system education in medical and nursing schools to provide comprehensive lymphedema education for healthcare providers
- Promote public awareness initiatives to reduce stigma and encourage early diagnosis

The Lymphatic Education & Research Network (LE&RN) is a trusted partner, working tirelessly to advocate for the lymphedema community. By collaborating with LE&RN and championing this issue, you can make a meaningful difference. We are confident that with your support, we can make significant strides in addressing the challenges of lymphedema.

LE&RN welcomes the opportunity to discuss this matter further and to provide additional information or resources to assist in your decision-making process.

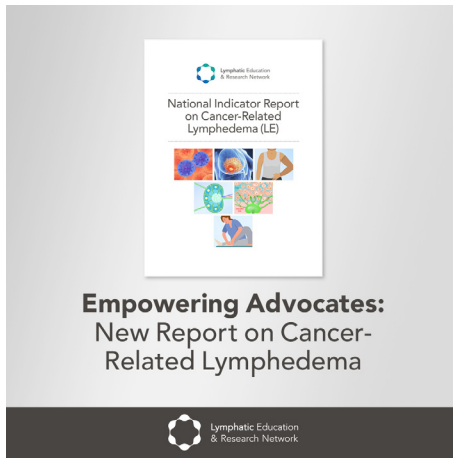
Additionally, please visit LymphaticNetwork.org to learn more about how you can help advance the fight against lymphedema. Together, we can create a brighter future for this overlooked patient population.

LE&RN
Lymphatic Education & Research Network
134 West 14th Street, 2nd Floor
New York, NY 10011 • 516-425-9675
info@lymphaticnetwork.org
www.lymphaticnetwork.org

POLICYMAKERS

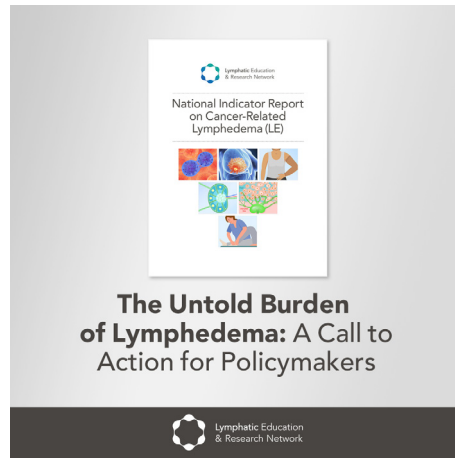
SOCIAL MEDIA GRAPHICS

ADVOCATES



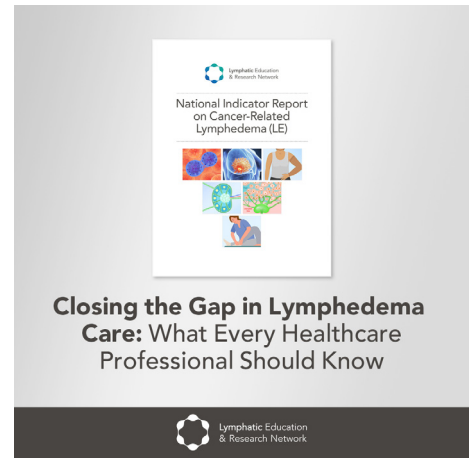
Instagram & Twitter Square
1080 x 1080 Pixels

HEALTHCARE PROFESSIONALS

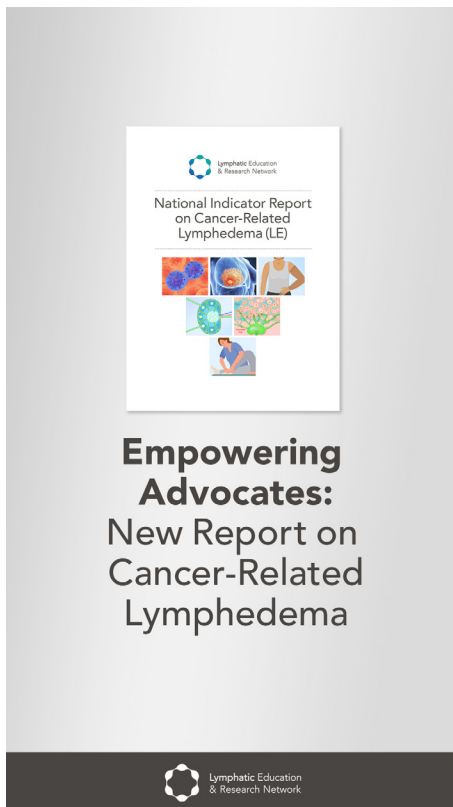


Instagram & Twitter Square
1080 x 1080 Pixels

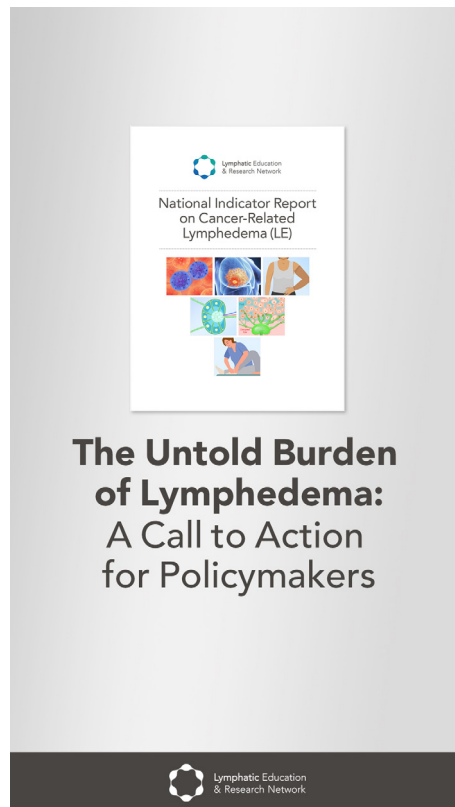
POLICYMAKERS



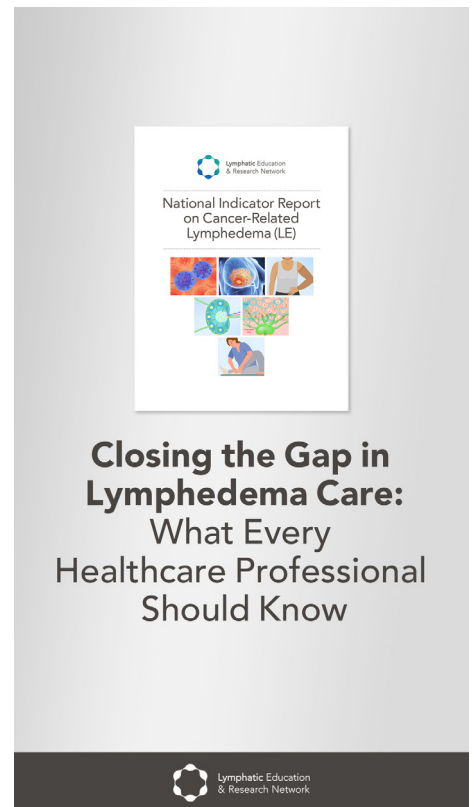
Instagram & Twitter Square
1080 x 1080 Pixels



Instagram Story
1080 x 1920 Pixels

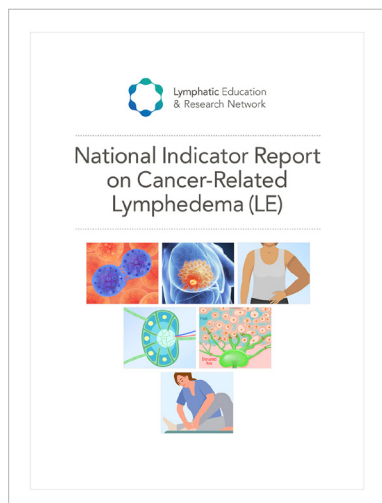


Instagram Story
1080 x 1920 Pixels



Instagram Story
1080 x 1920 Pixels

SAMPLE NEWSLETTER BLURB

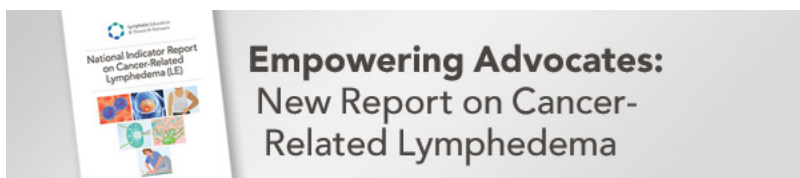


Headline: *New Report on Cancer-Related Lymphedema (LE)*

Copy: The Lymphatic Education & Research Network (LE&RN) has created the first-of-its-kind **National Indicator Report** to equip you, healthcare professionals, researchers, and policymakers with discussion points to effectively advocate for people living with cancer-related lymphedema. It highlights areas needing urgent attention, revealing opportunities to heighten awareness and improve the standard of care. Download the full report [here](#).

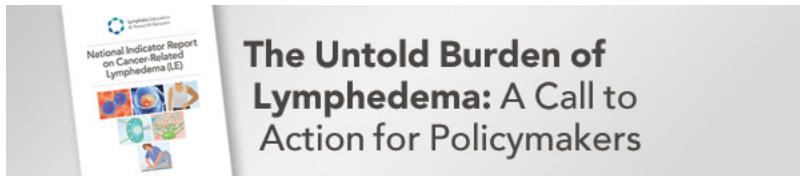
NEWSLETTER GRAPHICS

ADVOCATES



600 x 130 Pixels

HEALTHCARE PROFESSIONALS



600 x 130 Pixels

POLICYMAKERS



600 x 130 Pixels